



Division of Comparative Endocrinology

In this newsletter

- [Message from the Chair](#)
- [Message from the Program Officer](#)
- [Message from the Secretary](#)
- [Business Meeting Minutes 2009](#)
- [Message from the Student/PostDoc Representative](#)
- [Elections](#)

Message from the Chair

Stacia Sower

We had an excellent annual meeting at SICB in Boston in January 2009. The highlight of the meeting was the eighth annual Howard Bern Lecture presented by Professor Peter J. Sharp, PhD, FRSE, Genetics and Genomics Division, The Roslin Institute, University of Edinburgh, Scotland, UK. The title of his presentation was "Vertebrate Photoperiodic Signaling." The research that was presented was a broad view on vertebrate photoperiodic signaling based on a finding found years ago and brought to light many years later. We also again thank Elsevier and the SICB for support of the Howard Bern Lecture series. Our oral and poster presentations covered a broad range of comparative endocrinology. Our program officer, Stephan (or Steve) Schoech, will highlight our DCE contributions.

I encourage everyone to read the Grand Challenge Statement that was written by a subcommittee of SICB Executive Committee (EC) with input from all EC members: [a statement](#) on the importance of research in organismal biology. This statement has been forwarded to the National Science Foundation and will hopefully stimulate funding in areas important to members of the SICB. http://www.sicb.org/GrandChallengesOrgBio_v3.4.pdf

Current status, Challenges and Opportunities for our Division

Researcher Database. We would like to encourage every DCE member to submit one paragraph and diagram/schematic or photo for the DCE Researchers Database. This is one of the websites that has the most "hits" on the SICB webpage. Please send your paragraph to Mary Mendonça, our divisional secretary. She will forward it to SICB. This is one way of "advertising" for our division and perhaps attracting new members.



DCE Membership: The number of members in our division has decreased over the past ten years. Our division at one time had the largest number of members in SICB. How can we increase our membership? How do we recruit and retain our junior members?

One possible way is a name change to one that more accurately reflects the significance of comparative endocrinology in the 21st Century. A straw poll of the DCE members at the business meeting unanimously encouraged a discussion on consideration of changing the name of DCE to something that better reflects what we do. As we think about a name change, we can also think of the discipline itself. There has been a dramatic increase in our knowledge and understanding of endocrinology concurrent with significant growth in the Endocrine Society. Unfortunately, our division within SICB has not shown similar growth. I challenge our membership to think broadly about ways to increase and enhance the visibility of our discipline. <http://www.sicb.org/divisions/DCE/bbdce/>

Is it time that we think about a Society of Comparative Endocrinology affiliated with SICB? Some members have suggested a Pan-American Society of Comparative Endocrinology (PASCE) or the North American Society of Comparative Endocrinology. There is currently a European Society of Comparative Endocrinology and the Japan Society of Comparative Endocrinology. I **suggest a working group** of DCE members to address the issue of our division and provide a white paper by our next meeting in Seattle, 2010.

SICB Symposia: Symposia represent one of the most important activities of our Division and

are essential for the continued development and vigor of our field. If you are considering proposing a symposium for the SICB Meeting in 2011 in Salt Lake City, please contact Steven Schoech and Rosemary Knapp as soon as possible. The deadline for symposium proposal submission will be sometime in August, 2009.

SICB and WRCCE 2010 Seattle—Call for Focus-Type Contributed Sessions: At the SICB meeting to be held in early January 2010 in Seattle, the Western Regional Conference on Comparative Endocrinology was invited, and the invitation was accepted, to be part of the SICB annual meeting. We are asking you to start thinking about organizing “focus-type contributed sessions” for the Seattle meeting. We really want to encourage our members to attend and present at this meeting. We will provide key words for you prior to the submission of your abstracts to ensure that contributed papers will be grouped together. If you have an interest in being an organizer or co-organizer, please notify Stacia, Steve Schoech and Rosemary Knapp.

5. Howard Bern Lecture Series: During the past eight years, Elsevier has provided the funds to sponsor the Howard Bern Lecture Series. This past year was the last year of the Elsevier support. It will be now be incumbent upon the membership to provide support for this Lecture Series via a \$10 fee per member, develop an endowment (minimum of \$25,000) and/or revisit the issue with Elsevier. Your input/suggestions are welcomed.

6. Regarding support for meetings, requests are made to the chair of DCE and these are placed into the divisional budget to be approved by the SICB Executive Committee. The



budgets are formulated in the early fall, so if you are planning a meeting for which you intend to request funds from SICB please get those requests in as early as possible. It may not be possible to grant requests made after the budget is submitted.

At the annual DCE business meeting, we thanked **Cathy Propper** for her excellent service for the division for the past 3 years. Please note that Cathy was willing to serve an extra year as Secretary and her effort and time are much appreciated.

I want to thank **Ignacio Moore** for chairing the judging committee for the best student paper award and each of the judges for their hard work in identifying suitable candidates for the awards. The poster and oral presentations were very competitive and of high quality. Congratulations to all of the participants, and especially to the following award winners:

The **Aubrey Gorbman Award for Best Student Oral Presentation** was **Ryan Paitz** (Illinois State University) for his oral presentation entitled "Characterizing the biological activity of estradiol sulfate during embryonic development: Inactive steroid metabolite or precursor for steroid production?"



Gorbman Award
Winner – Ryan Paitz

The **Award for Best Student Poster Presentation** was given to two students: **Sara O'Brien** (University of Washington) for her poster titled "Reproductive profiles of gonadotropin-inhibitory hormone (GnIH) gene expression in White-crowned Sparrows *Zonotrichia leucophrys*" and **Camille**



Poster Award Co-Winner
Sara O'Brien

Okekpe (Auburn University) for her poster entitled "Effect of diet on periovulatory levels of steroid hormones and primary sex ratio in zebra finches."



Poster Award Co-Winner
Camille Okekpe

Message from the Program Officer

Steve Schoech

First, I want to thank all who attended the Boston meeting last month; it was an excellent meeting in all regards and I think our division was well represented. Approximate totals for DCE are: 4 symposia supported, (all or in part); 7 contributed sessions; 40 oral presentations (invited and contributed); 5 poster sessions; and 31 posters. Note that these numbers are in some cases rough approximations based upon presenters identifying themselves as being affiliated with DCE when they register or submit their abstract.

As is always the case, we had an exceptional contingent of students as indicated by the 16 oral and 26 poster presentations that entered the Best Student Presentation competitions. Congratulations to Ryan Paitz of Illinois State University for his Best Oral presentation award and to Sara O'Brien of the University of Washington and Camille Okekpe of Auburn University for their Best Poster awards. Thanks to Ignacio Moore for organizing the judging (and, he's kindly agreed to serve again next year!). Thanks also to the many judges - Fran Bonier, Loren Buck, Joe Casto, Ann Cheek, Robert Cox, Erica Crespi, Ryan Early, Alf



SICB Newsletter

Spring 2009 Issue

Haukenes, Rosemary Knapp, Sean Lema, Darren Lerner, Sharon Lynn, Richard Manson, Ned Place, and Sarah Woodley.

I know that I enjoyed the Bern Lecture by Dr. Peter Sharp who presented a wonderful overview of the mechanisms that mediate photoperiodism. Special thanks too to Dr. Lynn (Marty) Martin for co-hosting the DCE/ Psychoneuroimmunology Symposium Social - the combined support makes for a greatly improved event.

Looking forward to Seattle in 2010, as always, announcements will be sent out regarding abstract and registration deadlines this summer. DCE is supporting one symposium in 2010. I encourage any who have thought about organizing a symposium to start planning for 2011 when we'll meet in Salt Lake City. Feel free to contact me should you have any questions about symposia at 901.678.2327 or sschoech@memphis.edu.

See you in Seattle

Message from the Secretary

Mary Mendonça

As Stacia and Steve have said, the Boston meeting was excellent: interesting talks and posters, stimulating symposia, congenial colleagues, bracing weather, and awesome seafood!

I only have a few things. The first one is asking all members to make this the year that DCE gets its **Researcher Database** going.

Our division is lagging far behind some of the others in the number of submissions. We would like you to submit a paragraph on your research accompanied by an arresting photo or graphic which illustrates you and/or your work. You can see examples of the wide diversity of contributions in the Databases for some of the other SICB divisions (notably DEE: <http://www.sicb.org/divisions/dee.php3>). Once you submit your contribution, it can also be cross-listed in other Divisions where you have indicated an affiliation. Having your information on the SICB web site is a great recruitment tool for your lab! So please take a few minutes and send me the information and watch the DCE Researcher Database grow.

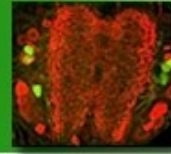
Second: some divisional bylaws changes are being proposed that 1) clarify how officers will be chosen if one of them is unable to complete his/her term and 2) removes a dollar amount from an annual DCE member fee.

I have included the old text and the proposed changes for the pertinent Articles below. Voting on these revisions will occur when we send out ballots for the spring elections.

additions; ~~deletions~~

Article VI: Chair

The Chair shall serve for a term of two years, directing the affairs of the Division and presiding at its business meetings. He/she shall represent the Division on the Society Executive Committee. He/she shall appoint at any time those committees as may be required to assist him/her to conduct the affairs of the



SICB Newsletter

Spring 2009 Issue

Division. At or before the Annual Meeting, he/she must appoint a nominating committee, consisting of a chair and two members, to present a slate of candidates to be elected for the office or offices to be filled for the following year. ~~He/she shall appoint substitutes for officers that are unable to serve to the end of their term.~~ **In the circumstance where an elected officer is unable to complete his or her term of office, the following provisions are made: If the office of Secretary or Program Officer is vacated early, the Chair, in consultation with the Divisional Executive Committee, will appoint someone to serve until elections can be held to fill the position. If the office of Divisional Chair is vacant, the Divisional Executive Committee, in consultation with the SICB President, will appoint someone to be the interim Chair until an election is held.**

Article XIV. Finances

All members of the Division of Comparative Endocrinology will be assessed an annual fee to be used to pay routine divisional financial obligations to affiliated societies, or for the support of regional or international meetings at which the DCE is recognized as an official component of the SICB. The fee will be double the annual dues set by the International Federation of Comparative Endocrine Societies (IFCES ~~currently \$2/member/year~~) to allow for the establishment of a fund to provide support for regional and international comparative endocrinology meetings. Applications for support for regional and international meetings will be made to the chair of the DCE.

Finally, here is a list of upcoming meetings that are of interest to our division.

Upcoming Meetings

The 16th International Congress of Comparative Endocrinology (ICCE) will be held in Hong Kong from June 22-26, 2009. The meeting website is <http://icce2009.hku.hk/welcome.htm> and the abstract submission deadline is April 15 and the registration deadline is May 1, 2009.

Before the 16th ICCE starts, there will be a satellite symposium, the 2nd International Symposium for Fish Growth & Reproduction (ISFGR), in Hong Kong, June 20-21 2009. Visit http://icce2009.hku.hk/satellite_symposium.htm for more information about ISFGR.

The Endocrine Society meeting will be held June 10-13, 2009 in Washington, D.C. The website for the meeting is <http://www.endo-society.org/endo09/> and the early registration deadline is April 17, 2009.

The Society for the Study of Reproduction will be held -22 July 2009 in Pittsburgh, Pennsylvania. The abstract submission deadline is 16 March 2009.

The 26th ESCPBnew (new European Society for Comparative Physiology and Biochemistry) Congress will be held in Innsbruck, Austria from September 6 - 10. The general theme of the congress will be: Environmental stimuli and their impact on homeostasis and gene regulation. Further information is available at



<http://escpbnew-innsbruck2009.xxls.de/> and the abstract submission deadline is May 10, 2009.

6th International Symposium on Amphibian and Reptilian Endocrinology and Neurobiology, Sept 20-23, 2009, Berlin Germany The meeting web site is <http://isaren.igb-berlin.de> and the deadline for abstract submission is May 15, 2009

Minutes of the January 2009 Business Meeting – Boston

The Business Meeting was called to order by DCE Chair, Stacia Sower.

Introductions: Stacia Sower then introduced the new divisional officers, Mary Mendonça, Secretary, and Rosemary Knapp, Program Officer-Elect. Outgoing DCE Secretary Cathy Propper was thanked by great applause for all her excellent service during her term and, especially, for her willingness to serve an extra year as Secretary.

Announcements: The minutes from last year's DCE business meeting in San Antonio, which had been posted in the Spring 2008 newsletter on the SICB web page, were then unanimously approved.

The Chair of this year's Nominating Committee was Michael Romero. He and his committee are seeking nominees for the positions of DCE Chair and Secretary for elections this spring.

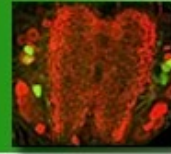
This year's honoree to give the Howard Bern Lecture is Dr. Peter Sharp from Edin-

burgh University. It was announced that there is now a Nominating Committee to determine who will be chosen to deliver the Bern Lecture and Dr. Sharp was the first person to be chosen under this new process.

It was announced that now one can, when registering on line for the annual meeting, sign up to judge Divisional Best Student papers much like one signs up to chair a session. People were encouraged to do so. The Chair of the Judging Committee for Best Student Oral and Poster Presentations is Ignacio Moore and we thanked him and his judges for their hard work. Wiley Science is providing \$300 for the student award winners. The names of the winners of the student competitions will be posted on the SICB web site as soon as possible and they will also be posted in the Spring Newsletter along with the names of the judging committee.

Steve Schoech, our Program Officer, then announced that DCE was associated with four different Symposia and seven Oral Sessions. Additionally, there were 40 oral presentations and 31 posters that listed DCE as their affiliation. He reminded members that they should be sure to pick DCE as their affiliation when future abstracts are submitted. This year there were 16 talks and 26 posters competing for Best Student Paper or Poster in DCE. Steve also urged people to think of Focus Sections or Mini-Symposia for the 2010 Seattle meeting as well as to submit Symposia topics for the 2011 SICB meeting.

Stacia Sower also stated that there is a proposal for a Late Breaking Symposium for the 2010 meeting entitled *Insights of Early*



SICB Newsletter

Spring 2009 Issue

Chordate Genomics: Endocrinology and Development in Amphioxus, Tunicates and Lampreys which will be partly sponsored by DCE and the SICB Program Officer will attempt to get funding from the NSF Research Coordination Network.

She also reminded us that the Western Regional Conference on Comparative Endocrinology (WRCCE) will be co-meeting with DCE at the SICB 2010 meeting in Seattle. Therefore, WRCCE will not have a Spring meeting in 2009. She encouraged everyone who usually participates in the WRCCE to come to Seattle and support our conference. Additionally if people are interested in organizing a focus type contributed sessions please notify Stacia and/or Steve.

Cathy Propper, our Secretary, announced several meetings of interest to our division:

16th International Congress of Comparative Endocrinology in Hong Kong, June 22-26

The Endocrine Society's annual meeting in Washington, DC June 10-13,

The Society for the Study of Reproduction's meeting July 18-22, in Pittsburgh,

6th International Symposium on Amphibian and Reptilian Endocrinology and Neurobiology in Berlin on September 20 – 23, the 25th International Ornithological Congress, Brazil, August, 2010, and the 18th International Ecdysone Workshop, České Budějovice, Czech Republic, July, 2010.

She also mentioned that the Divisional Newsletters are not being widely read and said there were discussions about sending the

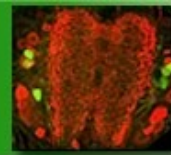
Newsletter as an attachment to the membership along with putting it on the SICB website.

Finally she urged that members submit an entry to the Researcher Data Base on the SICB web site. This could be a picture of you or students in the lab or field or some other interesting graphic about your research and a brief paragraph on your research. Having these have increased the number of hits on the other Divisions sites. Please send your entry to Mary Mendonça who will get it uploaded to our Divisional page.

Mary Chamberlin, the NSF Program Officer for Processes, Structure, and Integrity, talked to us about a new interdisciplinary funding program entitled "Life in Transition". There is a Dear Colleague letter of the NSF web site (<http://www.nsf.gov/pubs/2008/nsf08078/nsf08078.jsp?org=NSF>) that provides more details about the program. The three focus areas are 1) how the living world adapts to and transforms the earth's climate, 2) how energy transduction is managed by living systems in a diverse range of physiological environments, and 3) origin of life. To be considered for this funding, place LIT at beginning of proposal title. The normal target dates apply.

Cathy Propper asked for more information about the RCNs (Research Coordination Networks). Mary Chamberlin replied they are looking for proposals that advance a field, a technology, archive data, etc.

SICB Executive Officers (John Pearse, President, Rich Satterlie, President Elect, Ed Rosa-Molinar Program Officer, Lou Burnett Secretary) visited the DCE meeting:



SICB Newsletter

Spring 2009 Issue

Ed announced that there will now be \$100 cap for registrations costs for symposium speakers from the Society. Symposium organizers must find alternative support for the rest of the registration costs. The Society is trying to set up a Symposium Enhancement Fund to assist international presenters in paying the remainder of the registration. The Society is trying to get funds from NSF as well as place any surplus money into the Fund.

Action Items:

Cathy Propper announced that there are two proposed minor changes in Divisional By-Laws which will make our Division's by-laws consistent with those of other Divisions. They involve clarifying how officers will be chosen if one of them is unable to complete his/her term and removing a dollar amount from an annual DCE member fee. The old and new wording for the by-laws will be posted in the Spring Newsletter and after about 60 days they will be voted on by DCE members.

The Howard Bern Lecture Series will no longer be supported by Elsevier after this meeting. The Division is trying to establish a Howard Bern Lecturer Endowment (that would pay \$2,000/yr and have a minimum \$25,000 starting base) and is seeking funding suggestions. A possible idea would be to ask Academic Press.

Steve McCormick said, "What does it hurt to ask?"

Rosemary Knapp said that we might want to wait until the economy returns.

John Wingfield said we should see if we can come up with SICB sponsored matching funds

to add to the principal.

Ignacio Moore suggested asking other publishers too.

NSF has issued a Grand Challenge to the SICB membership to provide guidance on where the field of Organismal Biology is going. NSF wants the unique perspective of integrative biology and this call goes across Division lines. Examples of questions are:

What major questions in IOB would advance and promote the principals of regulatory networks?

What other system approaches?

What are long standing questions that can now be answered because we have the technology? Or what are still the challenges?

Also it would be helpful to have a catchy phrase for the general public.

Examples: Organism and Environment, Life in the changing environment, Ark, Earth, the Living Ark, IPlanet, Environmental Systems Biology, molecules to ecosystems

Mary Chamberlin from NSF said to also think beyond Biology. It would be good to link to the Physical Sciences and Engineering

Erica Crespi mentioned that computational aspects should be added.

Stacia will send a Powerpoint on this to DCE members. There will be a white paper on this from the SICB Executive Committee.

Stacia asked whether we should consider a changing the name of our Division to be more in line with what we do (much as ASZ became SICB). Examples of possible names: Hormonal



SICB Newsletter

Spring 2009 Issue

Regulation and Integration Environmental and Molecular Endocrinology: Environmental Endocrinology and Endocrinomics; Systems Endocrinology

Discussion on whether people understood the term "Comparative"

Rosemary Knapp stated there could be consequences for staying the same.

Anne McNabb asked for a straw vote about whether to discuss changing the name.

Vote was taken and there was general support to start the discussion.

Steve McCormick suggested Evolution be kept in the name, perhaps Division of Environmental and Evolutionary Endocrinology. It was also suggested not to have Molecular in title but to keep Endocrinology

This question will be put on a SICB discussion board for input from DCE members.

We again thanked Cathy Propper for her excellent service over the last three years.

Submitted by Secretary Mary Mendonça

Message from the Graduate Student and Post-doc Representative

Alexandra M. Class

Hello again to all graduate and post-doc members of DCE. The 2009 Boston meeting was filled with news of progress in research in integrative biology and exciting findings. The highlights of the meeting, including awards, can be found at <http://www.sicb.org/>. I en-

courage you to check the website for news and links to useful sources of information and funding.

In Boston this year, symposia highlighting comparative endocrinology were well attended and exemplified the importance of integrative biology. Recent cutbacks in funding for research in organismal biology are cause for concern and SICB has made an effort to highlight the value of research and progress the field (see the link above for a statement concerning this theme and a discussion board). The Boston conference also had great opportunities for students and postdocs to learn more about the post-grad Postdoc/ job search thanks to Larry Riley, the chair of the Student Postdoctoral Affairs Committee (SPDAC), who organized the useful student/ postdoc workshop, "How to Find a Postdoc Position; How to Apply For an Academic Job." Many thanks to the faculty panel members who contributed to the panel too.

Below I list some funding and career-search resources. If there are any comments about specific student-related aims or ideas for how to improve student-postdoc resources through DCE or SICB please contact me. Have a wonderful spring!

SICB resources

Potential student awards/ scholarships for students:

<http://www.sicb.org/students/awards.php3>

Jobs/Fellowships: this link leads to a customizable search-engine for job openings and funding sources through SICB



SICB Newsletter

Spring 2009 Issue

<http://www.sicb.org/jobs.php3>

Career search resources: another source for those searching for work opportunities

<http://www.sicb.org/careers/resources.php3>

Other resources

NSF specialized information for funding opportunities for graduate students:

<http://www.nsf.gov/funding/education.jsp?fundtype=2>

NIH information on grants available:

<http://grants.nih.gov/grants/guide/index.html>

***Sigma Xi* student support:**

<http://www.sigmaksi.org/about/overview/index.shtml>

***Sigma Xi* Grant In Aid of Research:**<http://www.sigmaksi.org/programs/giar/index.shtml> (deadline: Mar 15 /Oct)

Foundations can provide substantial support without tedious application processes or progress reports. For info and links to foundations: <http://foundationcenter.org/>

Post-doctoral opportunities: through national/ international organizations, foundations, grants and non-profits:

<http://www.phds.org/postdoc/postdoctoral-fellowships/>



DCE Elections

Candidates for Chair, in alphabetical order

Henry B. John-Alder



Current Position: Professor and Chair, Department of Ecology, Evolution, and Natural Resources, Rutgers University, New Brunswick, NJ

Education: Ph.D. University of California, Irvine (1983); M. S. Pennsylvania State University (1979); B. A. Franklin and Marshall

College (1974)

Professional Experience: 2007-Present: Professor and Chair, Department of Ecology, Evolution, and Natural Resources 1998-2007; Director, Graduate Program in Animal Sciences 1985-2007; Assistant through Full Professor, Departments: Biological Sciences; Animal Sciences

SICB Activities: Member since 1981; Secretary, Division of Comparative Endocrinology, 1996-97; Panelist, Grad/Post-Doc Workshop, 2003; DCE Nominating Committee, 2003-4; Chair, Educational Council, 2004-2006; Served as judge for Best Student Paper and session chair at several meetings.

Other Memberships: American Association for the Advancement of Science, American Institute of Biological Sciences, European Society for Comparative Endocrinology, Herpetologists League, Society of Behavioral Neuroendocrinol-

ogy, Society for Integrative and Comparative Biologists

Research Interests: Evolutionary endocrine physiology; Evolution and development of sexual dimorphisms in lizards; Environmental and molecular endocrinology of growth regulation in *Sceloporus* lizards; Effects of testosterone on the development of a sexually dimorphic behavioral, physiological, and morphological traits in Eyelid Geckos.

Statement of Goals: I have always been drawn to DCE because of the inherently integrative and evolutionary nature of comparative and environmental endocrinology. The recent emergence of the discipline of "evolutionary endocrinology" and the continuing synthesis of experimental molecular biology and evolutionary biology is likely to draw more and more interest to our division. Thus, DCE should be a natural "magnet" for the general membership of SICB – we simply have to spread the word about our interests and activities to members of other divisions. In this regard, our division will be well served as we improve our use of web-based communication. Furthermore, our new name will help to call notice to the evolutionary and environmental context of the integrative research conducted by our members. As DCE Chair-Elect, my primary goal will be to promote our divisional appeal, with an eye toward more seamless and fluid interactions among divisions.

Having come into endocrinology from a physiological background, fluid movement across levels of biological organization has always been my approach to research. It has been my approach to annual meetings of SICB.



Now, I believe this fluidity is the way of the future -- for our division and for our society.

Stephen D. McCormick

Current Position: Section Leader in Physiology, USGS, Conte Anadromous Fish Research Center, Turners Falls, MA and Adjunct Full Professor, Department of Biology, University of Massachusetts, Amherst

Education: B.S. Bates College (Biology and Economics), 1977; Ph.D., Biological Oceanography, Massachusetts Institute of Technology and Woods Hole Oceanographic Institution Joint Program in Oceanography, 1983.

Professional Experience: Section Leader in Physiology, USGS, Conte Anadromous Fish Research Center, Turners Falls, MA, 1990-present; Adjunct Professor, Department of Biology, University of Massachusetts, Amherst, 1990-present; Graduate Program Director, Organismic and Evolutionary Biology Program, University of Massachusetts, Amherst 2003-2007; Japanese Society for the Promotion of Science (JSPS) Visiting Scientist, University of Hokkaido, 2002; James Chair Visiting Professor, St. Francis Xavier University, Nova Scotia, Canada, 1999; Editor, General and Comparative Endocrinology, 2001-present; Postdoctoral Fellow, Department of Integrative Biology, University of California, Berkeley 1986-1990; Postdoctoral Fellow, Department of Fisheries and Oceans, St. Andrews Biological Station, New Brunswick, Canada, 1983-1986.

SICB Activities: SICB member since 1981; DCE Best Student Paper Award Committee, 1999, 2004; Grants-in-Aid Committee, 2001; Symposium speaker, 2000, 2009. International Congress of Comparative Endocrinology Local Organizing Committee 2005.

Other Memberships: American Association for the Advancement of Science, American Fisheries Society, American Physiological Society.

Research Interests: I am interested in environmental and hormonal control of osmoregulation, development, growth and energetics in fish, particularly anadromous species in need of conservation and restoration. Our recent focus has been the endocrine control and disruption of the parr-smolt transformation of Atlantic salmon.

Statement of Goals: In many ways comparative endocrinology is as strong as ever. There is an incredible diversity of approaches to our discipline and the species that we work on. The most recent SICB meeting in Boston had a large number of young endocrinologists doing compelling and often interdisciplinary work. We are presenting our work at an ever increasing number of meetings. But I am concerned that the SICB meeting is not the focal point for comparative endocrinology that it could be. I will work to strengthen comparative endocrinology within SICB and its visibility to our funding agencies such as NSF. I will promote relevant symposia and increase the opportunities for us to come together and interact at the annual meeting.



Candidates for Secretary, in alphabetical order

Erica Crespi

Current Position: Vassar College, Department of Biology, Assistant Professor (2005-present)



Education: B.S., Journalism and Biology, Lehigh University (1992); M.S., Biology, Wake Forest University (1996); Ph.D., Biology, University of Virginia (2001).

Professional Experience:

Research: Post-doctoral fellow, Reproductive Science Program and Molecular, Cellular & Developmental Biology Department, University of Michigan, (2001-2005). *Science Writing Experience:* Seminar speaker on science writing, The Writing Center, Vassar College (2006-2008); Given presentations to writing tutors, science majors, and scientists to improve science writing skills at Vassar; coordinator of science journalism workshop/panel discussions at Vassar and University of Michigan, free-lance newsletter designer, (1992-1994). *Professional reporting experience:* *The Morning Call*, Easton, PA (1992), *Backpacker Magazine* (1991), *New York Newsday* Discovery Section (1990); free lance newsletter designer (1992-1994).

SICB Membership and Activities: Member Division of Comparative Endocrinology, Division of Ecology and Evolution (since 2001); Student Poster/Presentation Judge (since 2002); Nomination Committee (2006).

Other Memberships: Society for Behavioral Neuroendocrinology

Research Interests: The ultimate goals of my research are to understand how organisms respond to environmental conditions during early life stages, and how these responses affect the physiology and fitness of animals throughout their lives. My research focuses on the interactions between the neuroendocrine stress axis and physiological regulators of energy balance, which integrate environmental and internal information into metabolic, behavioral, developmental, and morphological responses (i.e., phenotypic plasticity). I primarily use amphibian model systems, but I also study fish and mammals. I combine molecular, behavioral, developmental and ecological experimental approaches to understand these complex and interrelated responses and their fitness consequences. I am also involved in the development of undergraduate curriculum and research in genomics.

Statement of Goals: Serving as DCE Secretary is an excellent opportunity to work with the other officers to lead our division into the future as a vital, innovative, and exciting research organization. I hope to use my background in science journalism to facilitate greater communication among endocrinologists in all fields, and increase the visibility of our field in other areas of science and in the public domain. I look forward to working on the division newsletter, and I hope to increase its dissemination and impact to our division and beyond; but I also hope to work within SICB and other organizations to expand the ways we can



promote the work of the scientists and students within the division.

Sharon E. Lynn

Current Position: Associate Professor of Biology, The College of Wooster (2008 – present)

Education: B.S., Biology, University of South Carolina, 1996; PhD, Zoology, University of Washington, 2002

Professional Experience: As-

sistant Professor of Biology, The College of Wooster (2004 – 2008); Associate Professor of Biology, The College of Wooster (2008 – present); (2006-2008); Visiting Assistant Professor of Biology, Colby College, (2002 – 2004); Lecturer, Zoology, University of Washington (1999-2000) Chair, E-bird Steering Committee (NSF Research Coordination Network, "E-bird: Adaptations and constraints in avian reproduction: integrating ecology and endocrinology" (2006-2008).

SICB Membership and Activities: Member since 1999; Judge, Best Student Paper Award, 2006, 2008, 2009. DCE Best Student Poster Award, 2002.

Other Memberships: Society for Behavioral Neuroendocrinology; Ohio Physiological Society; Ohio Academy of Science.

Research Interests: Environmental endocrinology, acute stress, testosterone-behavior interactions. My research currently focuses on two issues in environmental endocrinology: 1) how behavioral sensitivity to testosterone re-

lates to constraints of the breeding environment, and 2) interactions of acute stress and reproduction in birds.

Statement of Goals: DCE plays a significant role in fostering and supporting both integrative and comparative approaches to the study of endocrinology. This division also does an excellent job of promoting its student and postdoctoral members. As secretary, I would work to promote these efforts by distributing information about upcoming events and relevant regional and national meetings; providing an organized and proactive approach to correspondence and cataloging of DCE activities; and further promoting involvement of student and post-doc members in SICB and DCE activities.