



## Division of Animal Behavior

### *In this newsletter*

- [Message from the Officers](#)
- [Business Meeting Minutes 2009](#)
- [Proposed Divisional Bylaw Changes](#)
- [Candidates for Elections](#)

### **Message from the Officers**

Greetings from your DAB executive officers! Thank you all for your participation in a great meeting this year in Boston. DAB had a strong showing in several symposia and many talks and posters throughout the meeting. If you are interested in sponsoring a symposium for the 2011 meeting in Salt Lake City, please contact divisional Program Officer Sarah Humfeld.

### **Best Student Presentations**

As always, the student presentations were wonderful. This year's winners of the best student presentations are:

*Best Student Talk:* A. M. Torregrossa. "Specialist and generalist herbivores regulate food intake on diets containing novel plant compounds"

*Best Student Poster:* Branislav Igic. "Perceptual modeling of egg color mimicry in cuckoo-host coevolutionary arms races"

### **Election of a New Chair**

After years of dedicated service, Tom Hahn will be stepping down as our chair at the close of the 2010 meeting in Seattle. Biographies for new chair candidates can be found below. Please show your support for the division by voting later this spring!

---

### **Business Meeting and Minutes**

*Chair: Tom Hahn*

*Program Officer: Sarah Humfeld*

*Secretary: Scott MacDougall-Shackleton*

1. By-law changes: The membership was notified that there will be an upcoming vote on by-law changes in the fall Ballot. The proposed changes are to bring DAB by-laws in line with the Society's and to update the relationship with the ABS.

2. Student Awards: The winners of last year's best student presentation awards were recognized and presented with certificates.



3. New Chair: The membership was notified that we will need to elect a new chair in 2009, and was asked to think about nominations.

4. Future meeting sites: The Chair let the membership know that the next meeting will be in Seattle, and that Salt Lake City and New Orleans were being considered for future sites.

5. NSF: Bill Zamer from the NSF gave a brief presentation on changes going on in the Animal Behavior Cluster and highlighted the Life in Transition Program.

## Proposed Divisional Bylaw Changes

As discussed in the business meeting, we are submitting changes to the election bylaws to make them consistent with SICB's bylaws.

Additions = **bold underline**; deletions = ~~strikethrough~~.

### Article III. Administrative Organization

#### Section 1. Officers

The officers of the Division shall be a Chair, Secretary, and Program Officer **and shall comprise a Divisional Executive Committee**. The Chair, Secretary and Program Officer shall be elected for a term of three years, and, except for the Chair, shall be eligible for reelection. Elections for each of these three offices shall occur individually and in consecutive years. **In the circumstance where an elected officer is unable to complete his or her term of office, the following provisions are made: If the office of Secretary or Pro-**

**gram Officer is vacated early, the Chair, in consultation with the Divisional Executive Committee, will appoint someone to serve until elections can be held to fill the position. If the office of Divisional Chair is vacant, the Divisional Executive Committee will appoint someone to be the interim Chair until an election is held.**

Rationale: The first addition defines the Divisional Executive Committee. The SICB Constitution requires all divisions to establish guidelines for filling offices that are vacated before the term is officially over.

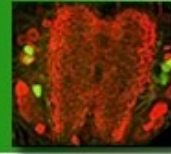
#### Section 2. Elections

**Election of officers shall be held by both paper and appropriately secure electronic ballots.** ~~Election of officers shall be by mail ballot of the Division. The names of candidates for offices shall be published in advance of a mail ballot. All officers shall assume the duties of their office following the annual Division business meeting.~~ **The term of office of all elected officers and appointed representatives shall begin at the end of the second SICB Executive Committee meeting at the Annual Meeting in the year the term is to begin and will end at the adjournment of the second SICB Executive Committee meeting at the Annual Meeting in the year the term is to expire.**

Rationale: These changes make the bylaws consistent with those of the SICB.

#### Section 3. Nominations for Chair

Nominations for the office of Chair will be



## SICB Newsletter

Spring 2009 Issue

solicited in consultation with the Animal Behavior Society. At least two candidates for the position should be named, although one written candidate is acceptable. Candidates for Chair must be members in good standing of the Society for Integrative and Comparative Biology and of the Animal Behavior Society.

Rationale: The Chair's role in liaising with ABS is discussed in IV.1 below. The requirement for membership in ABS may limit our ability to find good chairs.

### Section 6. Executive Committee

~~In intervals between meetings, the~~ management of the Division shall be vested in **the** an **Divisional** Executive Committee ~~consisting of the elected officers of the Division.~~

Rationale: Similar wording about management of the division between meetings occurs in places here and there in both SICB and divisional bylaws. It is strange. Does this suggest that something different happens DURING meetings? Also, the word "meetings" is not defined but presumably it is the annual meeting of SICB. However, some divisions hold meetings outside the annual meeting. Since Section 1 (above) defines the Divisional Executive Committee, there is no need to define it in this section.

### Section 9. Finances

The necessary expenses of the Division shall be disbursed from the treasury of the Society for Integrative and Comparative Biology, but in no year shall the total expenses of the Division exceed the amount specified by the SICB. The Division budget shall be prepared and commit-

ted by the Chair in consultation with the Executive ~~Officer~~ **Director** of the Society for Integrative and Comparative Biology and the Division officers.

Rationale: Executive Director is the term used in the SICB Constitution. Consultation might also occur with the elected SICB Treasurer. The Treasurer will definitely have a say in the approval of the budget. So you might want to modify this further.

### Article IV. Duties of the Officers

#### Section 1. Chair

The Chair shall preside at the business meeting of the Division, shall be responsible for the program and meetings of the Division, and shall promote in every practical way the interests of the Division. The Chair shall represent the Division on the Executive Committees of the Society for Integrative and Comparative Biology ~~and of the Animal Behavior Society.~~ **The Chair shall liaise with the Animal Behavior Society and consult with the Executive of the Animal Behavior Society to promote shared interests.**

Rationale: The Animal Behavior Society does not formally recognize the Chair of DAB on its Executive Committee.



## Elections Candidates for Chair

### Marilyn Ramenofsky

**Current Position:** Adjunct Professor Neurobiology Physiology and Behavior, University of California Davis.



**Education:** B.A. (Botany-Biology) Pomona College, 1969, M.Sc. (Zoology) University of Texas, Austin, 1972, Ph.D. (Zoology) University of Washington, 1982.

**Professional Experience:** 1969-1972, Teaching Assistant, Botany and

Zoology, University of Texas, Austin, 1972-1975, Research Specialist II, Scripps Institution of Oceanography, Drs. J. Faulkner and W.J. Heiligenberg. 1977-1981, NIH Predoctoral Trainee, Zoology, University of Washington, 1982-1983, NIH Postdoctoral Fellowship, Professor Peter Marler, Rockefeller University, 1983-1985, Visiting Assistant Professor, Biology, Vassar College, 1986-2007 Research Associate and Lecturer, Zoology and Biology, University of Washington, 1998 - , International Ornithological Committee, 2006 - , Board of Cooper Ornithological Society Board member

**SICB Activities:** Meeting Participant, Divisions of Animal Behavior and Comparative Endocrinology

**Other Memberships:** Animal Behavior So-

ciety, American Ornithologists' Union, Cooper Ornithological Society

**Research Interests:** I am fascinated by the interplay of environmental signals and the behavioral and physiological expressions of organisms and primarily those of migratory birds. Migration entails short and long trips and all distances and itineraries in between. But regardless of the migratory strategy, success depends upon a tight integration of environmental signals with behavioral, physiological and endocrine responses. Migrants therefore can serve as an effective model for studying how organisms rely on environmental conditions and respond to change. Currently, my work has focused on the effects of photoperiod, lunar condition, food availability and stressors on migratory specific characteristics that include migratory behavior (migratory restlessness, feeding, locomotor activity) and measures of the endocrine and metabolic systems. Other studies my lab have conducted include vocal communication of nocturnal migrants, role of experience and geomagnetic field on orientation during migration, circadian rhythms and as well as the impact of prolonged migratory restlessness on the endocrine and metabolic systems.

**Goals Statement:** As a graduate student, the first national meeting I attended was that of SICB (formally American Society of Zoologists). I have always enjoyed the society for its breadth and integration of disciplines and that it welcomes students of all ages. It is the perfect place to start ones career. The Division of Animal Behavior in SICB is the ideal venue for comparative approach to behavior as it





draws on multiple disciplines and serves as a strong training ground for students to prepare them to meet the demands of a changing world and its impact on the success and failure of populations and species.

If elected chair of the DAB I will focus my energies on supporting and extending the diversity and strength of the division by encouraging and soliciting symposia that pursue innovative approaches to the study of animal behavior. Application of novel technologies hold great promise for understanding how organisms interact with and respond to the environment and the DAB is well positioned to promote this kind of integrative science. Financial support for research and meeting attendance plays a huge role in promoting young scientists. A major role that I can play is to seek out alternative funding possibilities for graduate and post-doctoral students to participate and develop their careers in the DAB and I will work hard to see that this happens. These efforts can have huge payoffs in disseminating publications in the behavioral sciences to the public, a truly relevant and perceptive call made by Ira Flatow at the last annual meeting.

## Keith W. Sockman

**Current Position:** Assistant Professor, Department of Biology, Curriculum in Neurobiology, University of North Carolina, Chapel Hill

**Education:** B.A. (Biology), Occidental College, Los Angeles, 1990; M.A. (Biology), San Diego State University, 1996; Ph.D. (Zoology), Washington State University, Pullman, 2000

## Professional Experience:

1993-1996, Graduate Research Assistant, Department of Biology, San Diego State University; 1997-2000, Graduate Research Assistant, Department of Zoology, Washington State University; 2001-2004, NIH Individual-NRSA Postdoctoral Fellow, Department of Psychological and Brain Sciences, Johns Hopkins University; 2004-Current, Assistant Professor, Department of Biology (since 2004), Curriculum in Neurobiology (since 2008), University of North Carolina, Chapel Hill



**SICB Activities:** Divisions of Animal Behavior and Comparative Endocrinology; Meeting Participant and Presenter, 12 of past 13 years; Student Presentation Judge several times

**Research Interests:** Reproductive Ecology, Behavior, and Neurobiology. I am a reproductive biologist and study the ultimate and proximate factors controlling flexibility in reproductive decisions. Of particular interest is the study of courtship effort and mate-choice and how the songbird brain integrates the ecological and social information that adaptively guides these decisions. I am also interested in the ultimate and proximate control of the timing of reproduction, reproductive effort, and life-history trade-offs.

**Goals Statement:** I attended and presented at my first SICB meeting in 1996 as a graduate student and have continued attending and presenting at SICB meetings nearly



## SICB Newsletter

*Spring 2009 Issue*

every year since. Initially, I was drawn to the meeting by the strong student support and the many investigators taking comparative and integrative approaches. To me, one of the best ways to study animal behavior is in an integrative context, where the organism's evolutionary history, its natural environment, and its underlying physiological mechanisms are all considered simultaneously. For example, one of the most exciting areas of research in Animal Behavior is in the neurobiological regulation of natural, ecologically relevant behaviors. SICB's multi-division organization offers a good opportunity for interactions with members who are also highly integrative in their research but who focus on other aspects of organismal biology. As chair, I would try to strengthen those interactions and the role the Division of Animal Behavior plays in the Society by working toward greater membership and prominence of annual symposia. I am also interested in strengthening the representation of neuroethological research in the Division of Animal Behavior.